

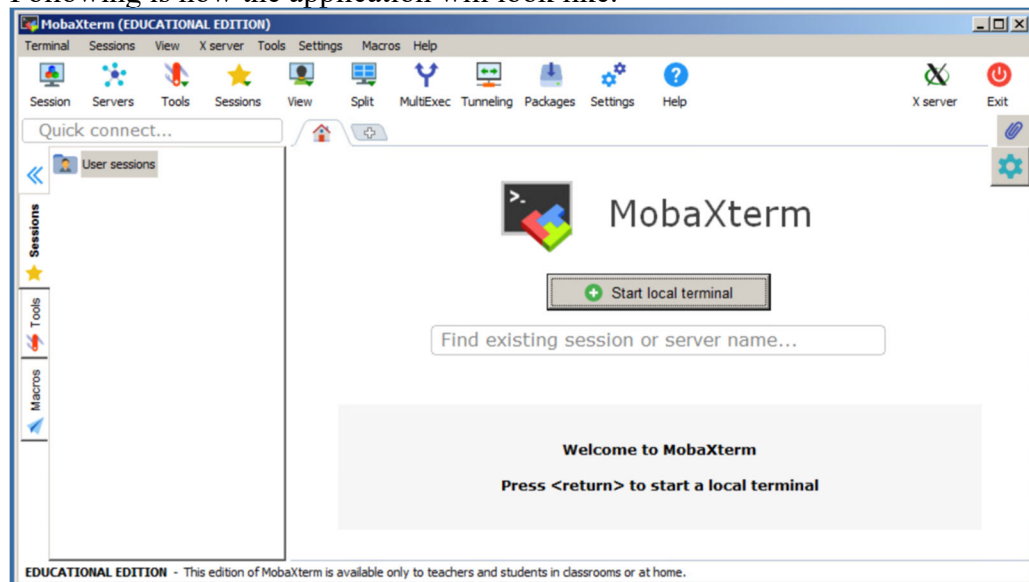
Connecting to Fox Servers

- CS department has set up Linux server for instructional use. These servers are called "Fox" servers, which is how we will be referring to them as.
- There are 4 servers set up for student use. In order to connect to them using SSH, you will need to use the IP addresses (not hostnames). Following are the IP addresses:
 - Fox01 - 10.100.240.201
 - Fox02 - 10.100.240.202
 - Fox03 - 10.100.240.203
 - Fox04 - 10.100.240.204
- You can connect to any of the servers. They all share the same file hierarchy. Meaning, your files will be available and be synced on all servers.
- Username - your *abc123*
- Password
 - If you already had an account, your password will be the same as last semester.
 - If not, the default password will be your BANNER ID (without the @). Please change your password right away using the "passwd" command.

Once you are on the UTSA network (more information in a separate document), you will need to connect to the Fox servers using a Secure Shell (SSH) connection. Following are some of the ways of doing this:

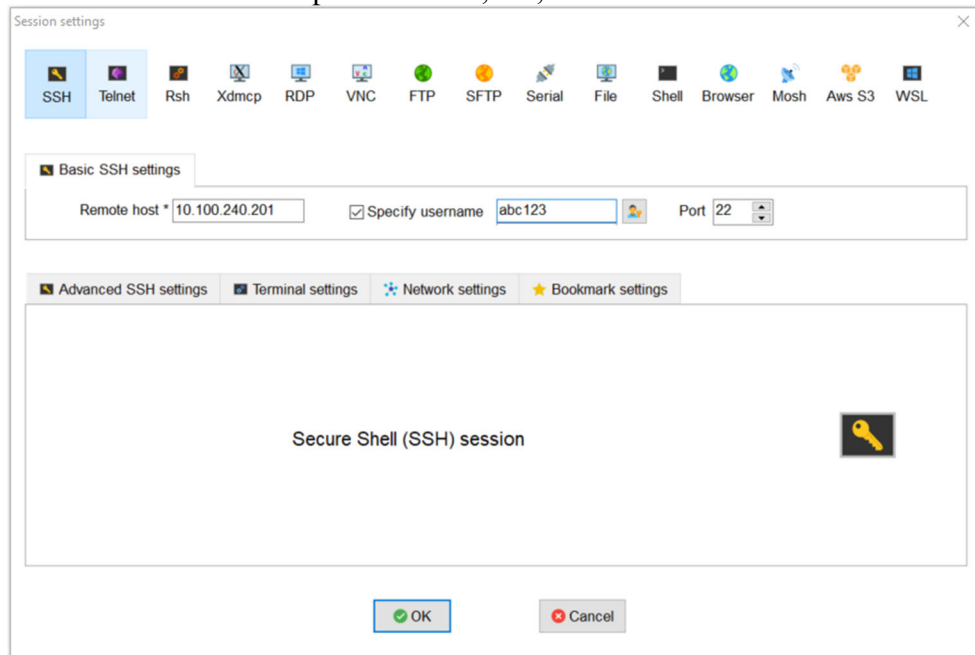
- **Windows - OpenSSH**
 - OpenSSH is the open-source version of the Secure Shell (SSH) tools used by administrators of Linux and other non-Windows for cross-platform management of remote systems.
 - OpenSSH has been added to Windows as of autumn 2018, and is included in Windows 10 and Windows Server 2019.
 - Please go through this link for more information - https://docs.microsoft.com/en-us/windows-server/administration/openssh/openssh_overview.
 - Run Command Prompt
 - Type "ssh {abc123}@{ip-address}".
 - Replace "{abc123}" with your abc123 without curly braces.
 - Replace "{ip-address}" with the IP address of the Fox server you are trying to connect to.
 - Upon pressing enter, it may ask you to accept security certificates, please type "yes".
 - Next, it will prompt for password, type it there. Upon success, you will be in the Fox server.
 - To close the connection, type "exit" and press enter.
- **Mac / Linux**
 - Run Terminal
 - Type "ssh {abc123}@{ip-address}".
 - Replace "{abc123}" with your abc123 without curly braces.

- Replace "{ip-address}" with the IP address of the Fox server you are trying to connect to.
- Upon pressing enter, it may ask you to accept security certificates, please type "yes".
- Next, it will prompt for password, type it there. Upon success, you will be in the Fox server.
- To close the connection, type "exit" and press enter.
- **Windows - MobaXterm**
 - If you prefer to use a Graphical User Interface (GUI), MobaXterm is a tool that can be used to establish a Secure Shell (SSH) connection.
 - You can download MobaXterm from here - <https://mobaxterm.mobatek.net/>.
 - If you will be using the UTSA VDI, MobaXterm will already be loaded on the desktop.
 - Double click the icon. If asked for admin access and if you do not have it, press 'Cancel'. It will still allow you to use the application.
 - Following is how the application will look like.



- Click "Session" from the top left corner. In the tab that is opened, select "SSH".
- In the "Remote Host" text box, enter the IP address of the Fox server you would like to connect to.
- Select the check box to the left of "Specify Username" and in the text box enter your *abc123*.

- Click "OK". This will open a session, i.e., a black terminal window.



NOTE: *When you are typing a password, it will not appear on the screen and the cursor will not move. But rest assured the password is being typed.*